

PRODUCT CATALOGUE



 **citrendlog**.io



Key features

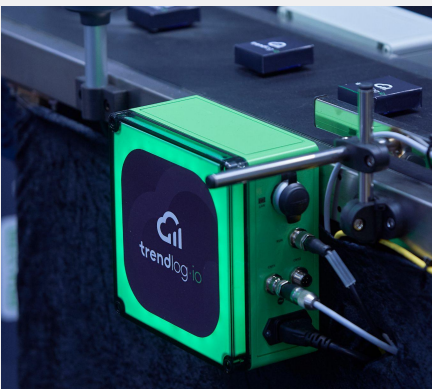
Plug & Play

IoT device & gateway

Ethernet, WiFi or GSM

The all-in-one IoT device used for both simple and more advanced data collection applications

The Trendlog COLLECT box is used for monitoring production and machine data but is also used as a Data Gateway to Trendlog Cloud for meters/sensors or communication with Extender modules and PLC's. One box can typically be connected with up to 8 machines on a production line along with a range of meters, and is installed easily by your local technician or one of our Trendlog Integrators.



Pricing

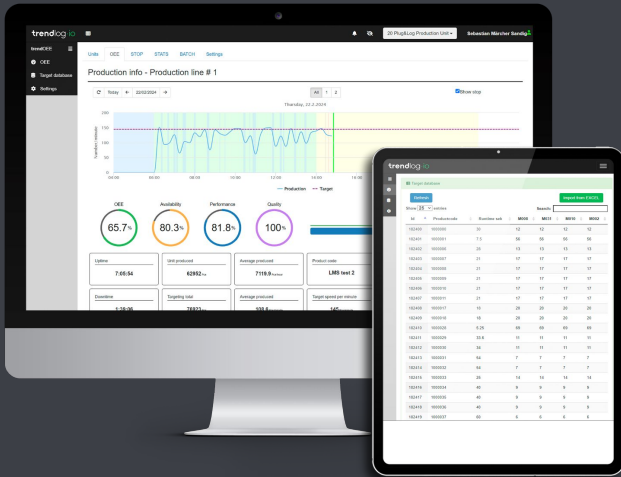
COLLECT: 1072 EUR

Extenders: 130-550 EUR

More info

Go to product page - [link](#)

Watch Unboxing-video - [link](#)



Key features

Realtime & historical OEE

Actionable insights

Stop cause overview

Batch performance

Get a smart overview and increase your efficiency with the OEE solution that'll revolutionize your production

TrendOEE is the solution for companies who wants better production insights in terms of efficiency, utilization, downtime, stop causes, batch production and more. You'll get realtime data to deal with low efficiency, a smart solution for the operators to register errors and track production orders, as well as a clear overview of OEE around the factory. Get a better overview, localize bottlenecks, minimize downtime and increase your overall efficiency with this OEE solution.



Pricing - subscription

Per machine/prod. line: 35 EUR/month

Enterprise: Fro +10 machines/prod. lines

More info

About TrendOEE - [link](#)

About production monitoring - [link](#)

How to register stop causes - [link](#)

Maintenance Planner



Key features

A CMMS system

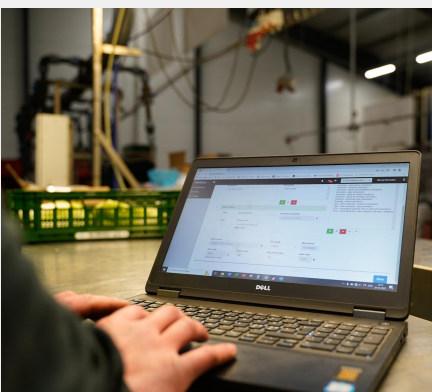
Individual service task lists

Preventive & Predictive

Up to 500 machines

Proactive and organized maintenance can prevent and reduce downtime on your machines and in your production

Maintenance Planner is a maintenance management system (CMMS) that helps you predict, organize, and document all service and maintenance tasks. The system keeps track of all tasks and lets the responsible technician know when and which tasks to perform, and then saves the documentation in a historical view. This means that your machines have a longer lifespan, and it reduces costs in terms of prevented downtime and untimely repairs.



Pricing - subscription plan

Up to 50 linjer: 100 EUR/month

Up to 100 linjer: 134 EUR/month

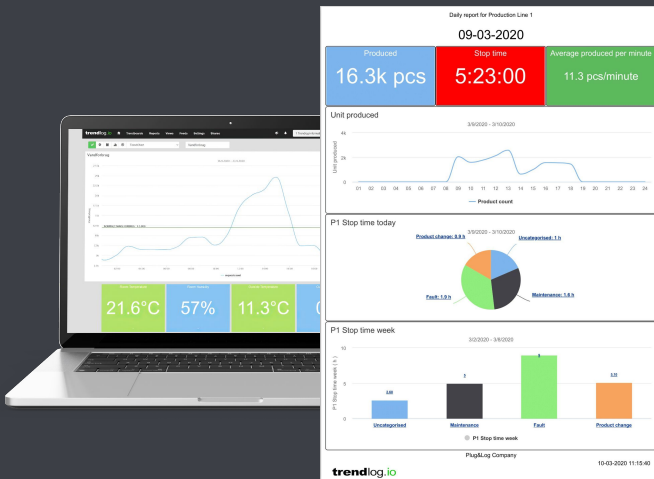
Up to 300 linjer: 200 EUR/month

More info

Go to product page - [link](#)

Free trial period - [link](#)

Energy & CO₂ Reporting



Key features

Power, heat, CO₂, gas

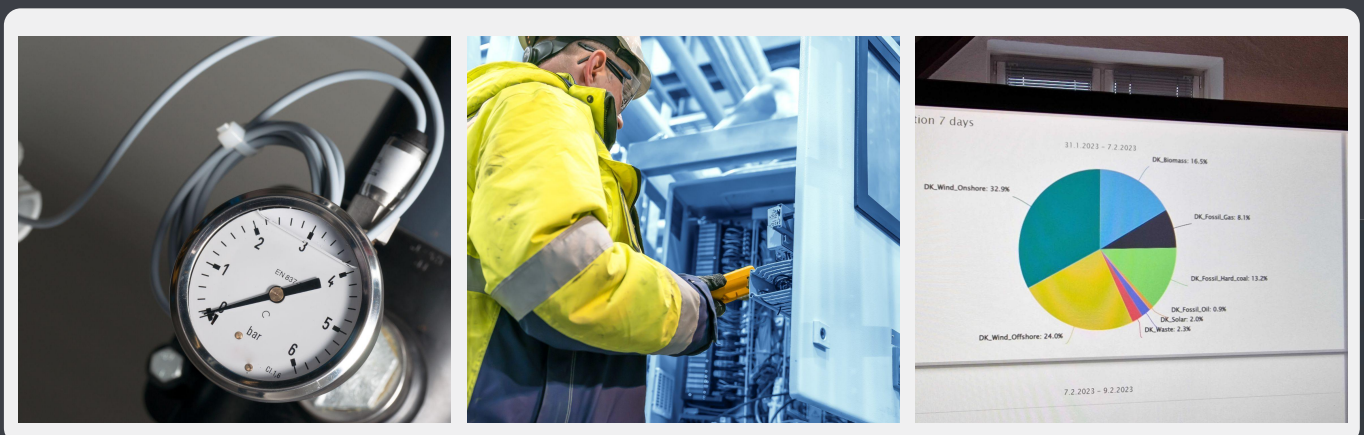
Wireless sensors and meters

Realtime and historical data

Easy & automatic reporting

Manage the consumption from machines and the production in general with an easy analysis and reporting tool for Energy & CO₂

Would you like a better overview of your consumption on machines and around the factory? Get a better understanding of usage and waste, so you can identify opportunities for optimization and cost savings. Trendlog.io helps with meters and sensors for gas, water, energy, temperatures, and provides you with an easy tool to monitor consumption and create CO₂ reports. Easily and quickly installed with your own local electrician or with the help of one of our Trendlog Integrators.



Pricing - subscription plan

Up to 20 meters: 3.5 EUR/month per meter

Up to 100 meters: 3 EUR/month per meter

+100 meters: Enterprise

More info

Go to product page - [link](#)

Selection of meters - [link](#)



Key features

Automatic price optimization

For cooling & heating plants

Up to 20% cost savings

Up to 33% CO₂ reduction

Save up to 20% on your energy costs and CO₂ emissions with our AI-powered energy optimization solution

Our Smart Energy solution is particularly useful for energy-intensive processes and generates an optimized consumption profile based on variable energy prices, meaning you always use the energy you need at the lowest price without compromising on quality or productivity. The Smart Energy solution can create massive savings on your energy costs and CO₂ consumption. Contact us to learn more!



Pricing

Configuration range: 2–20.000 EUR

Subscription model: REQUEST

More info

Go to product page - [link](#)

Calculate your ROI - [link](#)

Pricing

IoT hardware & software



Trendlog COLLECT

IoT device & Gateway for EXTENDERS

Link til [Datasheet](#)

Pris: **1072 EUR**

Excl. sensors, cabling, installation etc.

Data EXTENDERS

I/O for COLLECT, DIN compatible

Up to 16 Digital / 8 Analog Input

Price: **130–550 EUR**

TrendOEE

Flexible OEE solution

Prod. monitoring and stop causes

Price per machine*: **35 EUR/month**

Entreprise from +10 machines*

**Machines, production lines, processes*

Maintenance Planner

CMMS for all service & maintenance

Up to 50 lists*: **100 EUR/month**

Up to 100 lists*: **134 EUR/month**

Up to 300 lists*: **200 EUR/month**

Link to [Free Trial](#)

Energy & CO₂ Reporting

Tracking power, gas, water, temp. etc.

Up to 20 meters: **25 EUR/month****

Up to 100 meters: **20 EUR/month****

Entreprise from +100 meters

***Subscription price per meter*

Smart Energy

Priceoptimized power & CO₂ reductions

SmartPrices, SmartEnergy & PRO

Initiation: **2–20.000 EUR*****

Subscription price: **REQUEST*****

****Depends on plant, capacity & complexity*

There are natural bundling benefits in terms of price and returns, if you utilize several of our applications. Contact us for a specific quote.